

— PROTOCOL —

## Kplus DNA Ladder RTU (Ready-to-Use)

Catalog Number	Unit Size	Reactions
DM011-R500	86 ug / 500 ul	

**Storage** : Store at 25°C for 6 months  
 Store at 4°C for 12months  
 Store at -20°C for 24 months

### Description

An unique combination of a number of proprietary plasmids digested with appropriate restriction enzymes and PCR products to yield 19 fragments, suitable for use as molecular weight standards for agarose gel electrophoresis. The DNA includes fragments ranging from 100-10,000 base pairs. The 500, 1.5K and 3K bands have increased intensity to serve as reference points. The approximate mass of DNA in each band is provided (0.86 ug a load) for approximating the mass of DNA in comparably intense samples of similar size.

### Source

PCR products and double-stranded DNA digested with appropriate restriction enzymes, are phenol extracted and equilibrated to 10 mM Tris-HCl (pH 8.0) and 10 mM EDTA.

**Range:** 100-10K bp

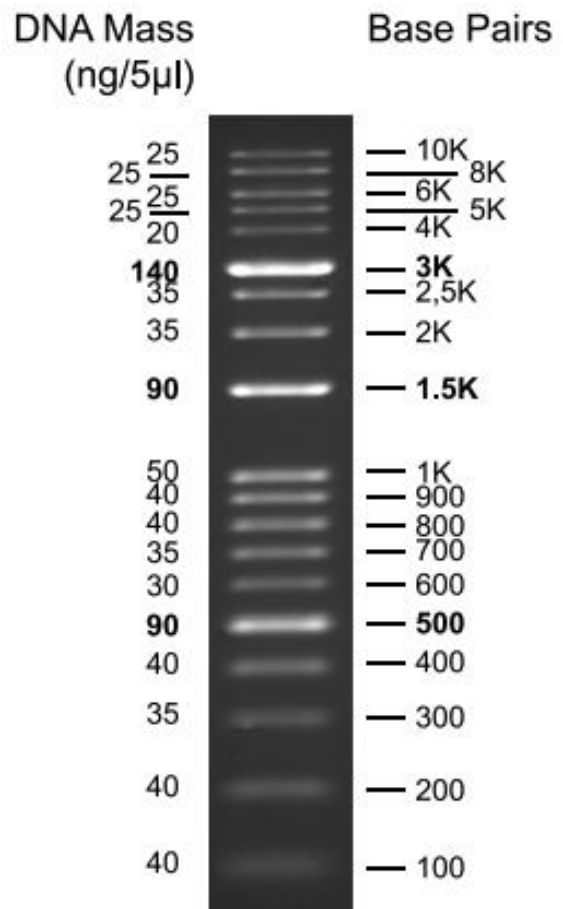
**Number of bands:** 19

**Concentration:** 172 ug/ml

**Package:** 86 ug/500 ul

**Recommended Load:** 5 ul / well

Containing orange G, xylene cyanol FF and bromophenol blue as tracking dyes



1.5 % TAE agarose gel