

— PROTOCOL —

XLarge DNA Ladder RTU (Ready-to-Use)

| Catalog Number | Unit Size | Reactions |
|----------------|----------------|-----------|
| DM013-R500 | 52 ug / 500 ul | |

Storage : Store at 25°C for 6 months
 Store at 4°C for 12months
 Store at -20°C for 24 months

Description

A unique combination of a number of proprietary plasmids digested with appropriate restriction enzymes and PCR products to yield 14 fragments, suitable for use as molecular weight standards for agarose gel electrophoresis. The DNA includes fragments ranging from 250-25K base pairs. The 1K and 3K bands have increased intensity to serve as reference points. The approximate mass of DNA in each band is provided (0.52 ug a load) for approximating the mass of DNA in comparably intense samples of similar size.

Source

PCR products and double-stranded DNA digested with appropriate restriction enzymes, are phenol extracted and equilibrated to 10 mM Tris-HCl (pH 8.0) and 10 mM EDTA.

Range: 250-25K bp

Number of bands: 14

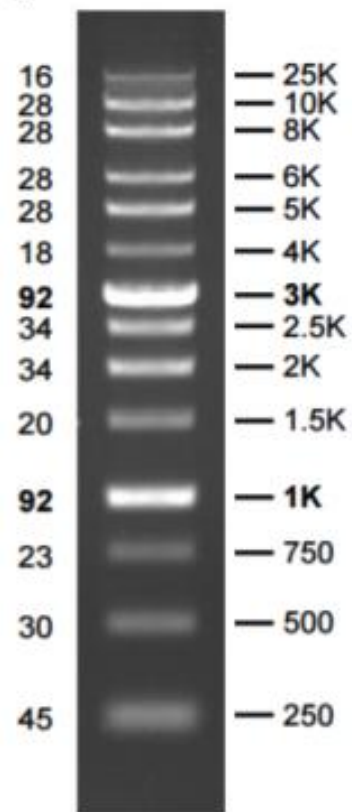
Concentration: 104 ug/ml

Package: 52 ug/500 ul

Recommended Load: 5 ul / well

Containing bromophenol blue and xylene cyanol FF as tracking dyes

DNA Mass (ng/5ul) Base Pairs



0.7 % TAE agarose gel