

— PROTOCOL —

## 1Kb DNA Ladder RTU (Ready-to-Use)

Catalog Number	Unit Size	Reactions
DM010-R500	50 ug / 500 ul	

**Storage :** Store at 25°C for 6 months

Store at 4°C for 12months

Store at -20°C for 24 months

### Description

A unique combination of a number of proprietary plasmids digested with appropriate restriction enzymes and PCR products to yield 13 fragments, suitable for use as molecular weight standards for agarose gel electrophoresis. The DNA includes fragments ranging from 250-10,000 base pairs. The 1K and 3K bands have increased intensity to serve as reference points. The approximate mass of DNA in each band is provided (0.5 ug a load) for approximating the mass of DNA in comparably intense samples of similar size.

### Source

PCR products and double-stranded DNA digested with appropriate restriction enzymes, are phenol extracted and equilibrated to 10 mM Tris-HCl (pH 8.0) and 10 mM EDTA.

**Range:** 250-10,000 bp

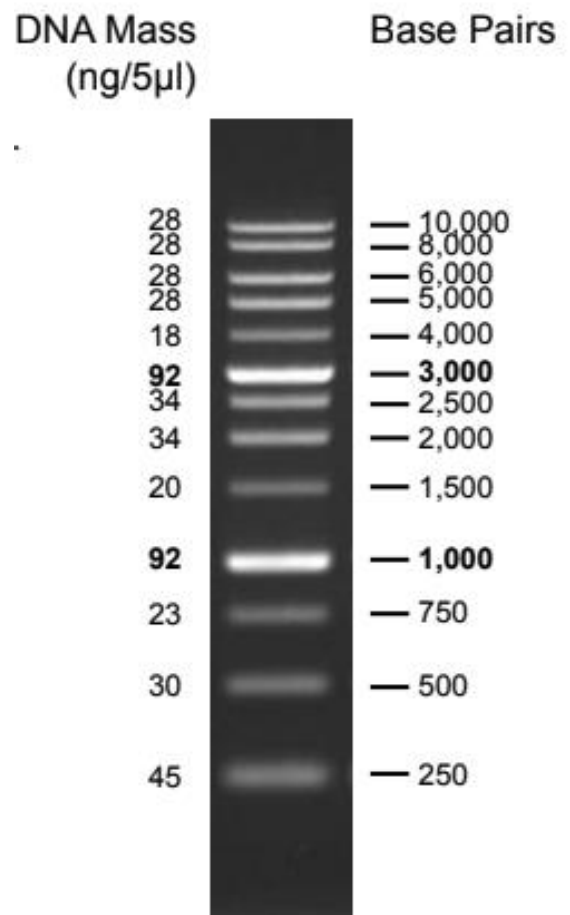
**Number of bands:** 13

**Concentration:** 100 ug/ml

**Package:** 50 ug/500 ul

**Recommended Load:** 5 ul / well

Containing bromophenol blue & xylene cyanol FF as tracking dyes.



1 % TAE agarose gel